

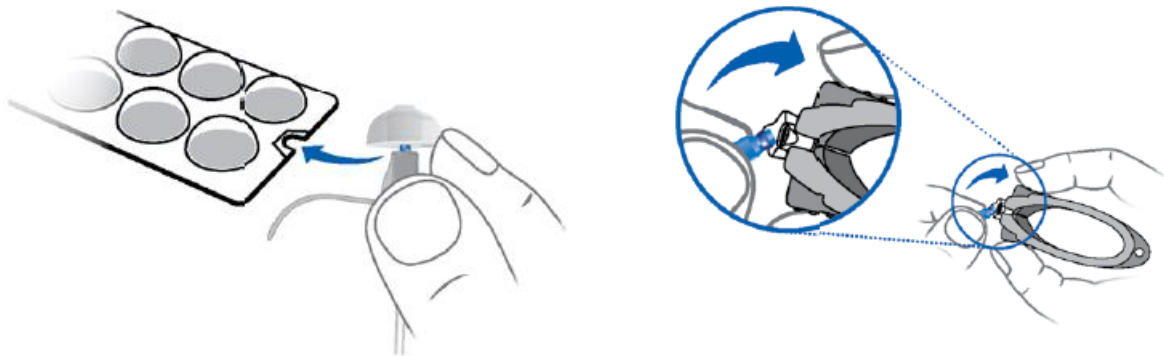
## IF Hearing Aids - Exchanging Domes/Sleeves & Filters

### Exchanging

Exchange standard ear pieces approximately every three months. Replace them sooner if you notice cracks or other changes.

### Exchanging Click Domes

- To remove the old Click Dome, follow the instructions on the packaging of the Click Domes or use the removal tool (optional accessory).
- Be careful not to pull the receiver cable.



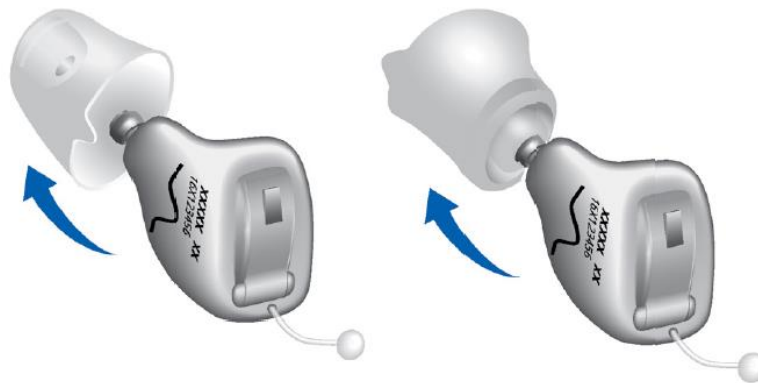
- Place the new Click Dome face down on a flat surface.
- Firmly push the receive into the new dome.
- Take particular care that the new Click Dome clicks noticeably in place.
- Check the firm fit of the new Click Dome.



## RIC Hearing Aids - Exchanging Domes/Sleeves & Filters

### Exchanging Click Sleeves

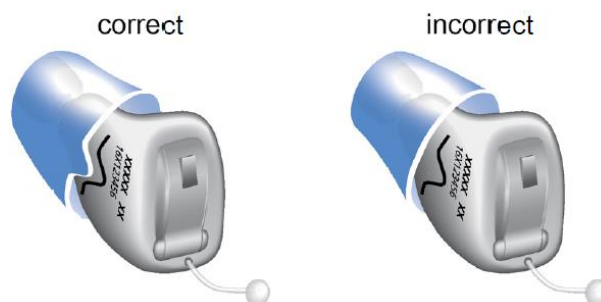
- Grip the Click Sleeve with your fingers and pull it off. If you cannot grip it, turn it inside out and then pull it off.



- Push the new Click Sleeve firmly into place onto the receiver.
- Take particular care that the new Click Sleeve clicks noticeably in place.



- When installing the new Click Sleeve, take care that the flap of the Click Sleeve matches the line printed on the device.



## Exchanging the receiver wax guard

Before sending a hearing instrument to our service centre, perform a visual check to see if the receiver is blocked by cerumen. If this is the case, exchange the receiver wax guard.

- Remove the dome or sleeve.
- Screw the threaded end of the wax guard changing tool into the filter of the external receiver.
- Remove the used filter.
- Flip the tool over and push the new wax guard into place.
- Release the filter by tilting the changing tool to the side. Then dispose of the changing tool/

